

SPARK

a development by Spider





RELAX... ENJOY...

...LIVE.

ORAL REPRESENTATIONS CANNOT BE
RELIED UPON AS CORRECTLY STATING THE
REPRESENTATIONS OF THE DEVELOPER. FOR
CORRECT REPRESENTATIONS, MAKE REFERENCE
TO THE DOCUMENTS REQUIRED BY SECTION 718.503,
FLORIDA STATUTES, TO BE FURNISHED BY A DEVELOPER
TO A BUYER OR LESSEE.

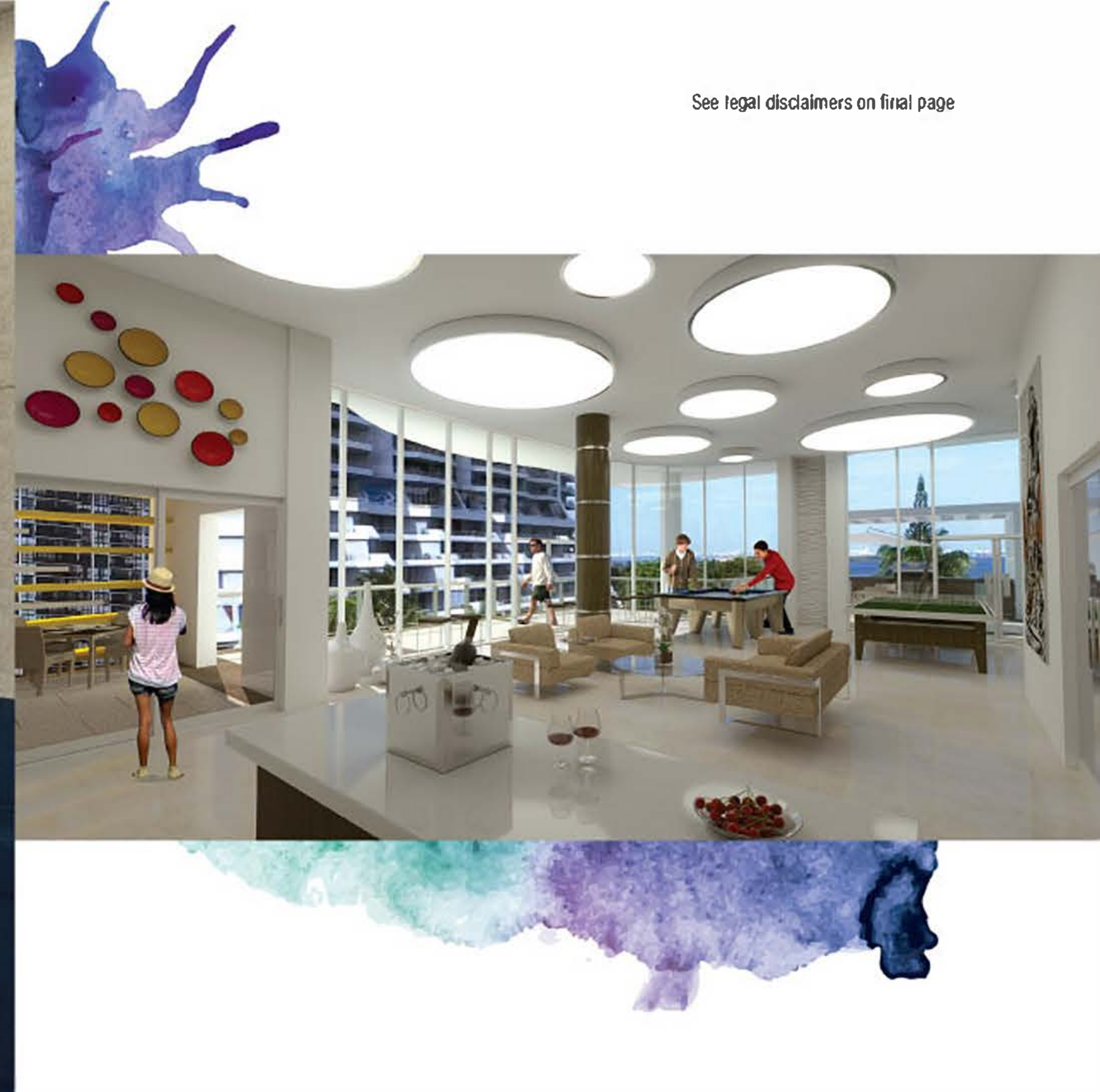


Welcome to Spark, envisioned to offer residents more than a luxury living environment; formulated to cultivate a quality lifestyle infused with art, luxury and green living.

Spark's luxury amenities were conceptualized to provide happiness and beautiful moments with the people you love, in the intimate and exclusive setting of only 56 residences with comfortable community spaces that each member of the spark family will enjoy.

See legal disclaimers on final page

The excitement of a new kind of space, made from and for the love of art, becomes evident from the moment of arrival. Modern and sleek design with industrial touches, present the perfect canvas for the exhibit of multiple art pieces and artistic finishes that set the stage for the unparalleled experience that awaits inside.







See legal disclaimers on final page



The spaces are designed for those willing to challenge the stereotypes of Miami luxury living, and cater to the arts, sports, music, and entertainment.

Located right next to the culture, shopping, and tourism areas of Wynwood, Design District, and Midtown, with nearby access to Miami Beach and Miami airport.



WE ARE
FASHIONABLE,
COOL,



See legal disclaimers on final page



OPEN MINDED AND FUN

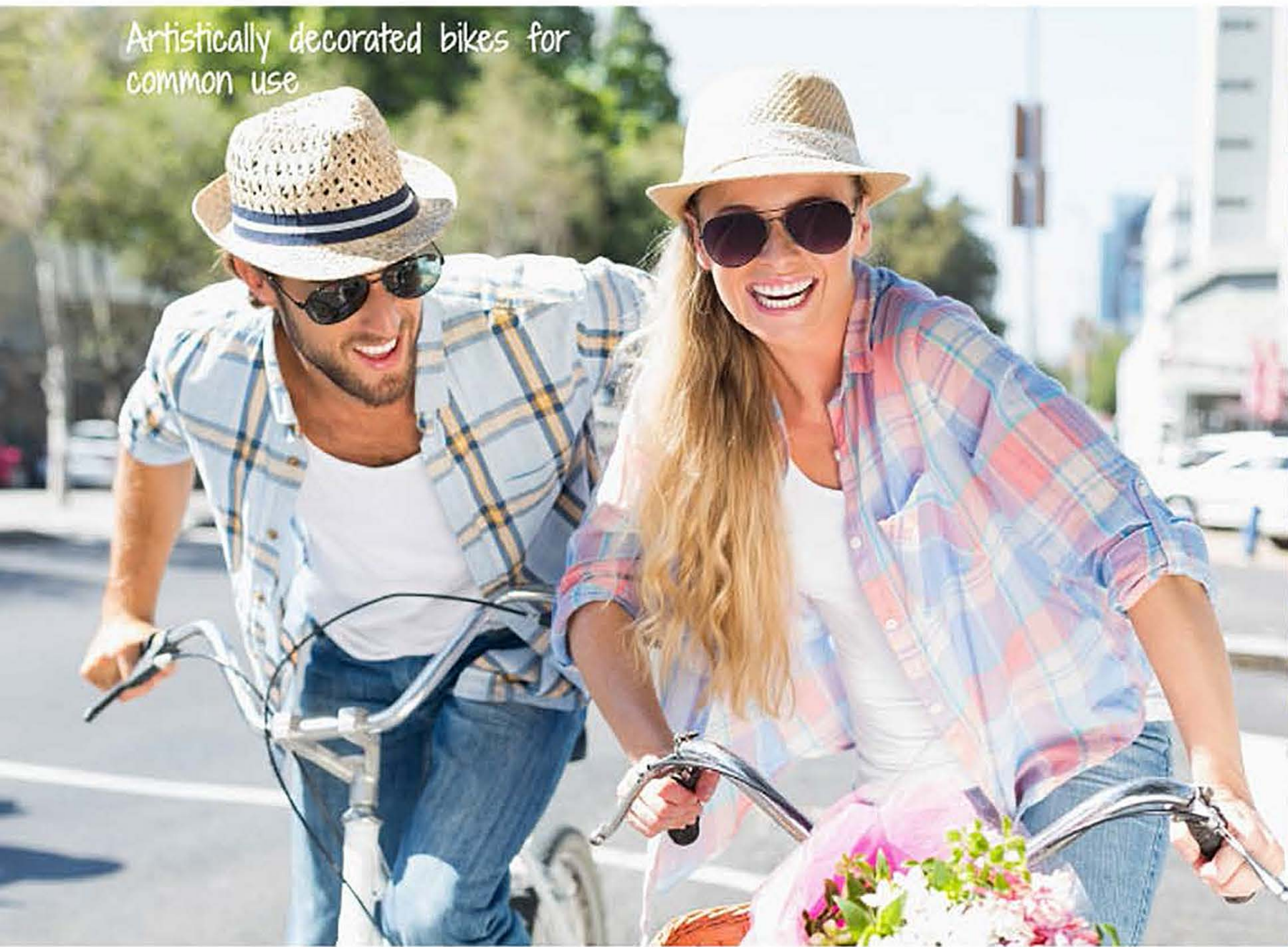
INSPIRED LIVING

Accessible to Wynwood
and the Design District



See legal disclaimers on final page

Artistically decorated bikes for
common use



See legal disclaimers on final page



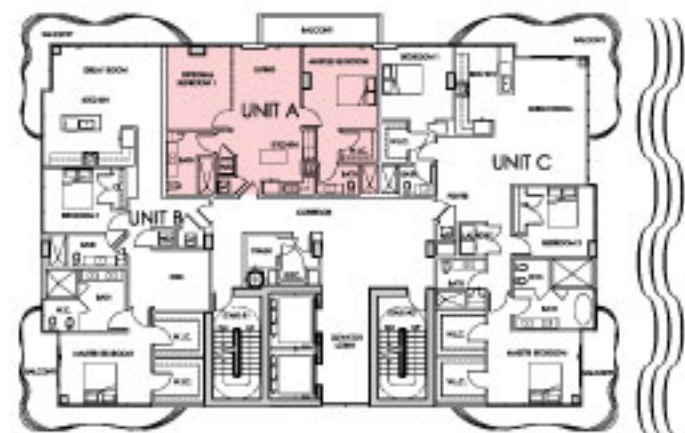
WE ARE SPARK...



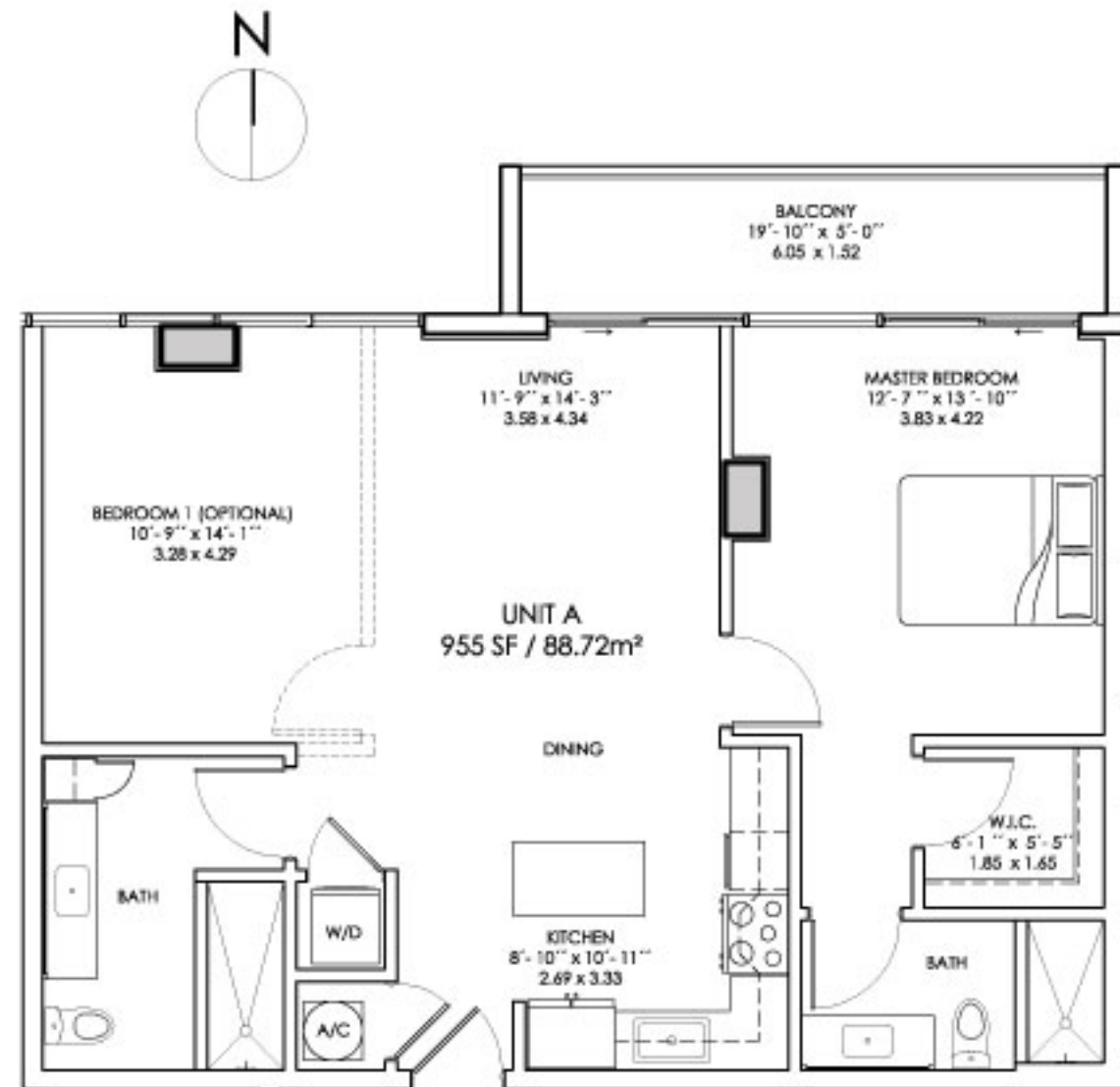
Spectacular water and city views, open layouts, expansive balconies, amazing finishes and an artistic character. An unparalleled Miami living experience with luxurious and comfortable spaces.

UNIT A

* TYPICAL FLOOR PLAN (7th - 25th LEVEL)



1 Bedroom, 2 bath.
Optional 2nd bedroom
Surface: 955 sf / 88.72 m²
Balconies: 99 sf / 9.2 m²



Stated dimensions are measured to the exterior boundaries of the exterior walls and the centerline of interior demising walls and in fact vary from the dimensions that would be determined by using the description and definition of the "Unit" set forth in the Declaration (which generally only includes the interior airspace between the perimeter walls and excludes interior structural components). Note that measurements of rooms set forth on this floor plan are generally taken at the greatest points of each given room (as if the room were a perfect rectangle), without regard for any cutouts. Accordingly, the area of the actual room will typically be smaller than the product obtained by multiplying the stated length times width. All dimensions are approximate and may vary with actual construction, and all floor plans and development plans are subject to change.

* As is customary, the number "13" has been skipped in the floor counts, so the floor directly above 12 is floor 14, and there is no 13th floor.



See legal disclaimers on final page

UNIT B

*TYPICAL FLOOR PLAN (7 th - 25 th LEVEL)



2 bedroom, 2 bath + Den
Surface: 1490 sq ft / 138.42 m²
Balconies: 340 sq ft / 31.59 m²

Stated dimensions are measured to the exterior boundaries of the exterior walls and the centerline of interior demising walls and in fact vary from the dimensions that would be determined by using the description and definition of the "Unit" set forth in the Declaration (which generally only includes the interior airspace between the perimeter walls and excludes interior structural components). Note that measurements of rooms set forth on this floor plan are generally taken at the greatest points of each given room (as if the room were a perfect rectangle), without regard for any cutouts. Accordingly, the area of the actual room will typically be smaller than the product obtained by multiplying the stated length times width. All dimensions are approximate and may vary with actual construction, and all floor plans and development plans are subject to change.

*As is customary, the number "13" has been skipped in the floor counts, so the floor directly above 12 is floor 14, and there is no 13th floor.



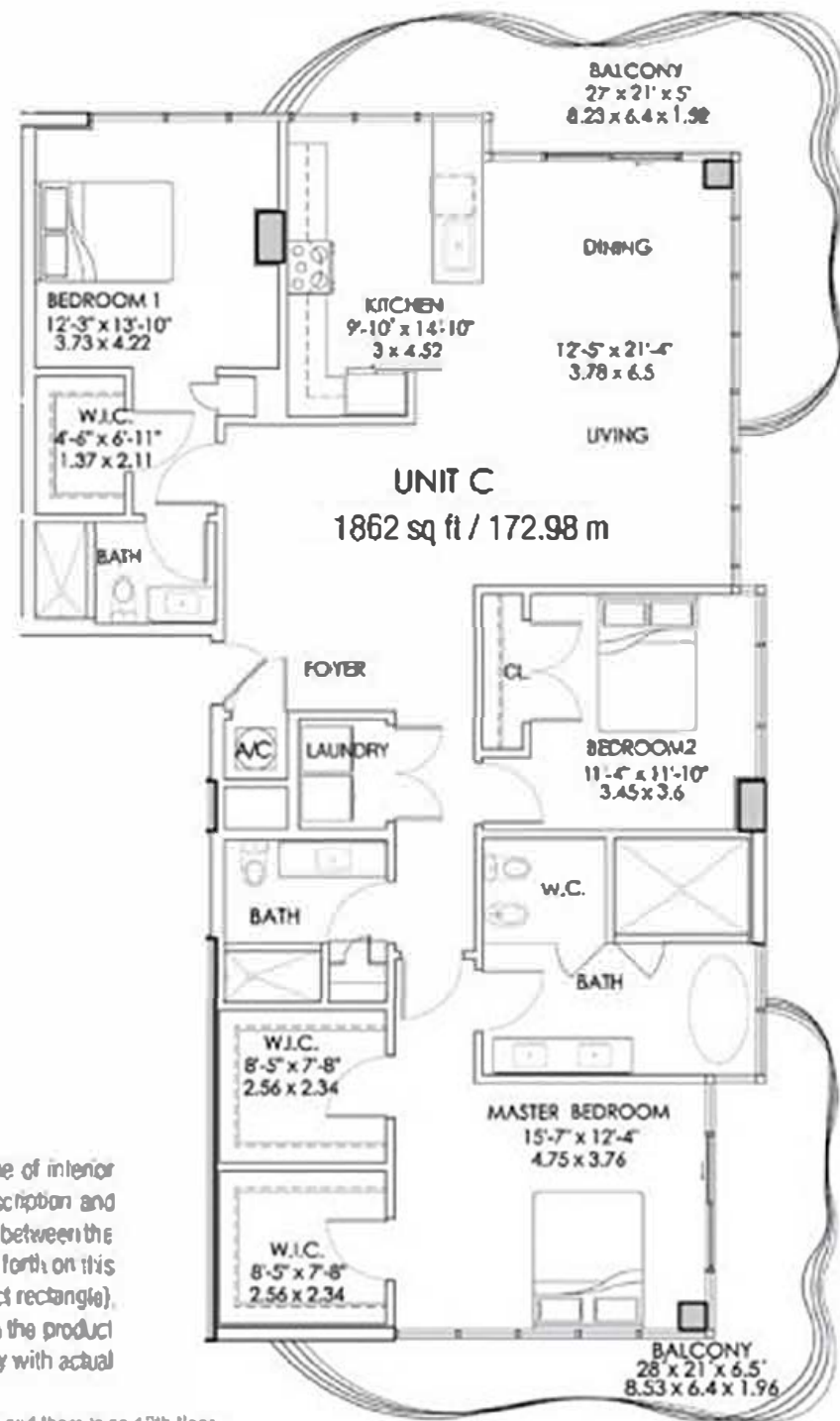
See legal disclaimers on final page

UNIT C

* TYPICAL FLOOR PLAN (7th - 25th LEVEL)



3 bedrooms, 3 baths
Surface: 1862 sq ft / 172.98 m²
Balconies: 378 sq ft / 35.12 m²

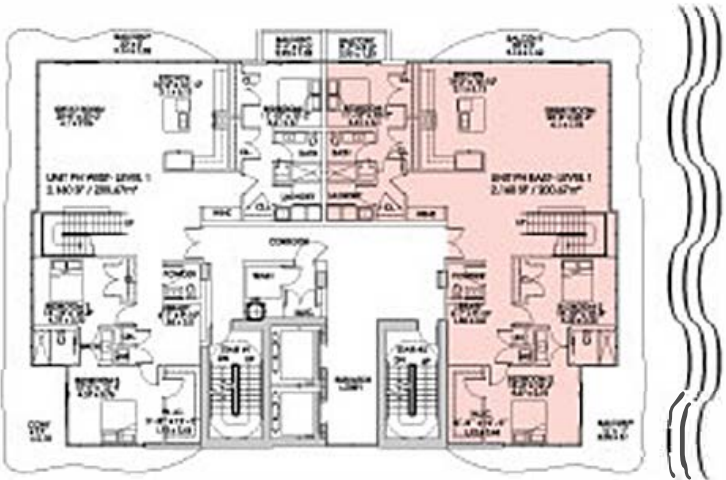


Stated dimensions are measured to the exterior boundaries of the exterior walls and the centerline of interior demising walls and in fact vary from the dimensions that would be determined by using the description and definition of the "Unit" set forth in the Declaration (which generally only includes the interior airspace between the perimeter walls and excludes interior structural components). Note that measurements of rooms set forth on this floor plan are generally taken at the greatest points of each given room (as if the room were a perfect rectangle), without regard for any cutouts. Accordingly, the area of the actual room will typically be smaller than the product obtained by multiplying the stated length times width. All dimensions are approximate and may vary with actual construction, and all floor plans and development plans are subject to change.

*As is customary, the number "13" has been skipped in the floor counts, so the floor directly above 12 is floor 14, and there is no 13th floor.



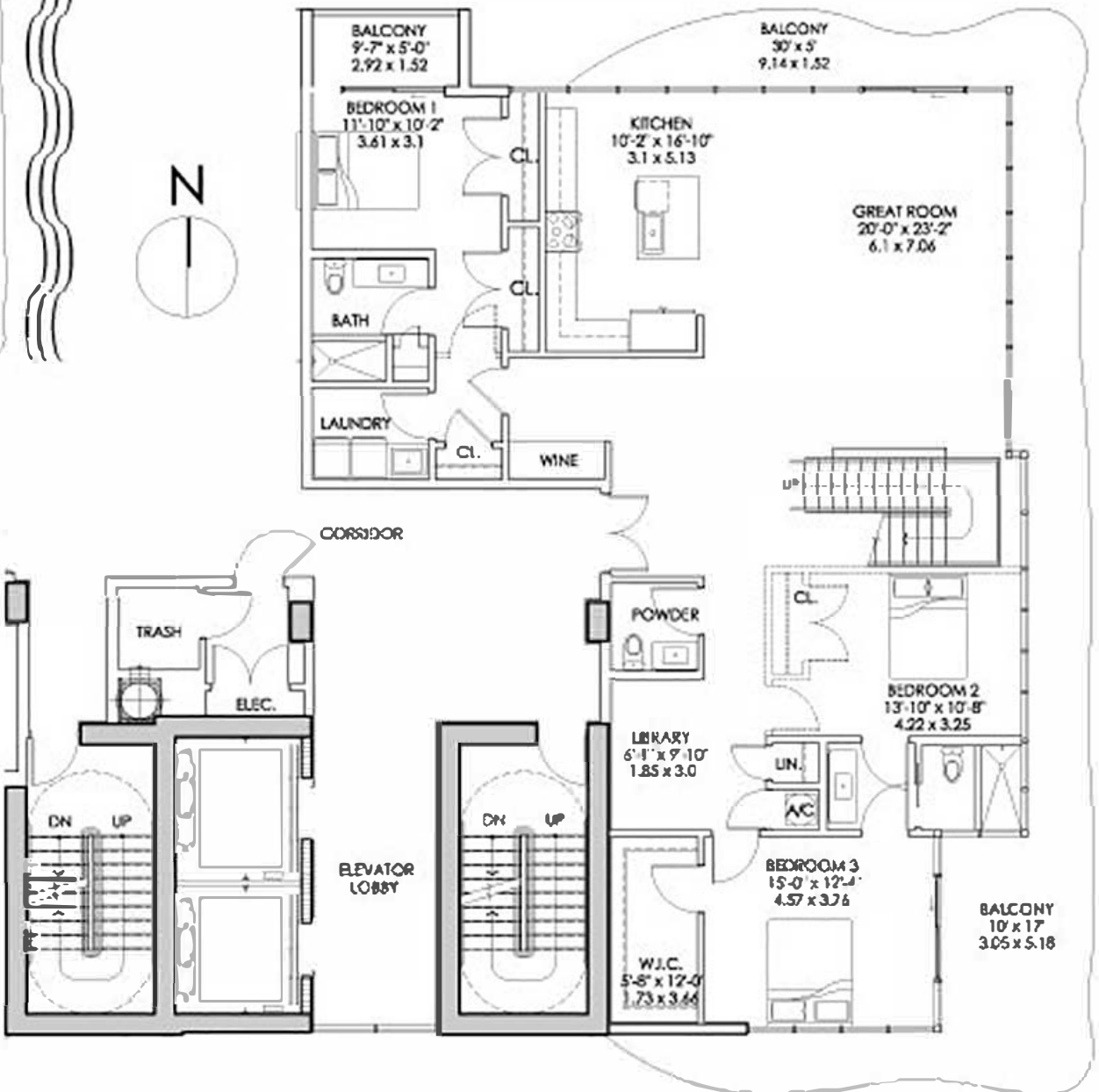
PENTHOUSE EAST



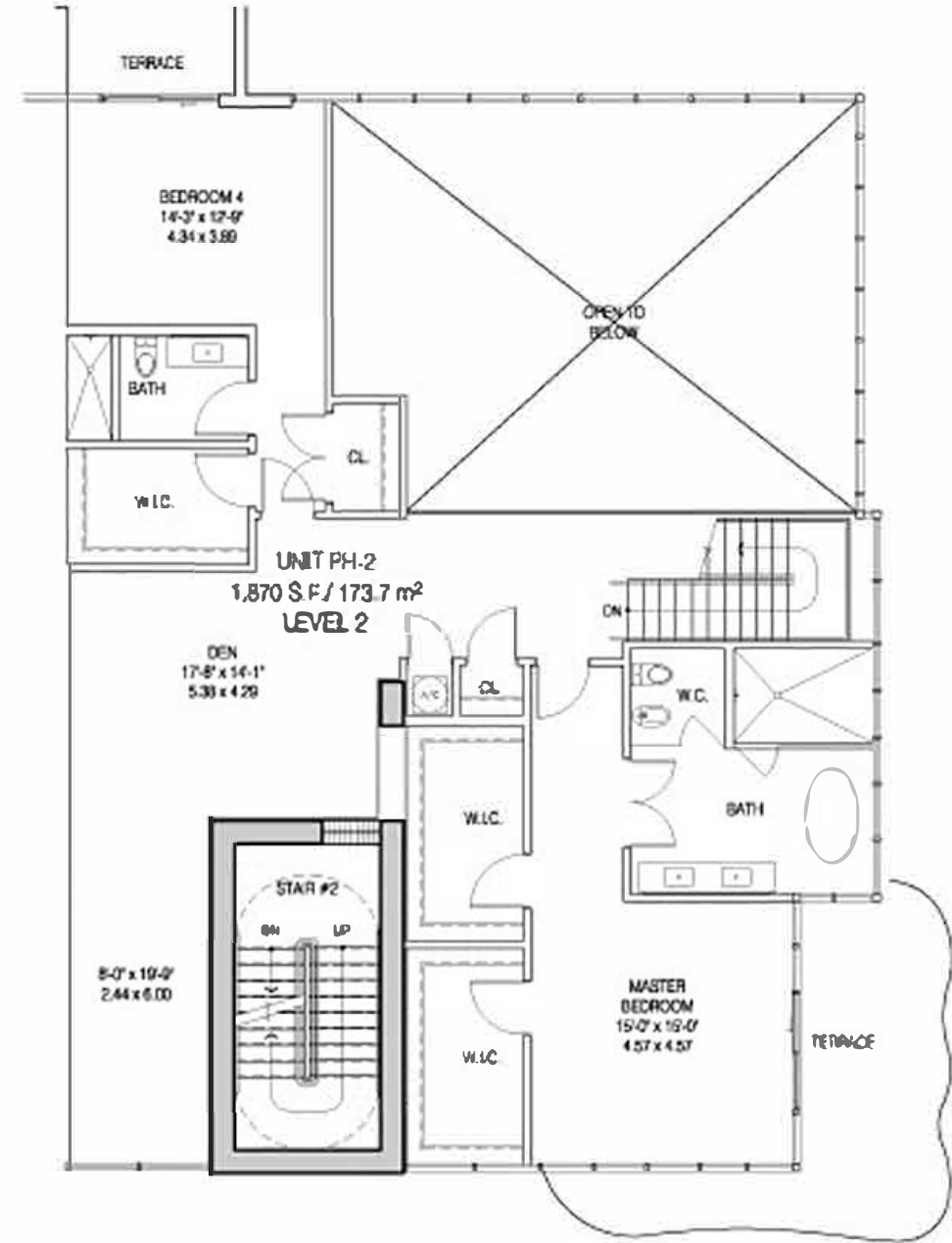
5 bedrooms, 4.5 bathrooms + Den
Surface: 4076 sf / 378.67 m²
Balconies: 790 sf / 79.39 m²
Rooftop terrace: 558 sf / 51.84 m²

Stated dimensions are measured to the exterior boundaries of the exterior walls and the centerline of interior dividing walls and in fact vary from the dimensions that would be determined by using the description and definition of the "Unit" set forth in the Declaration (which generally only includes the interior airspace between the perimeter walls and excludes interior structural components). Note that measurements of rooms set forth on this floor plan are generally taken at the greatest points of each given room (as if the room were a perfect rectangle), without regard for any columns. Accordingly, the area of the actual room will typically be smaller than the product obtained by multiplying the stated length times width. All dimensions are approximate and may vary with actual construction, and all floor plans and development plans are subject to change.

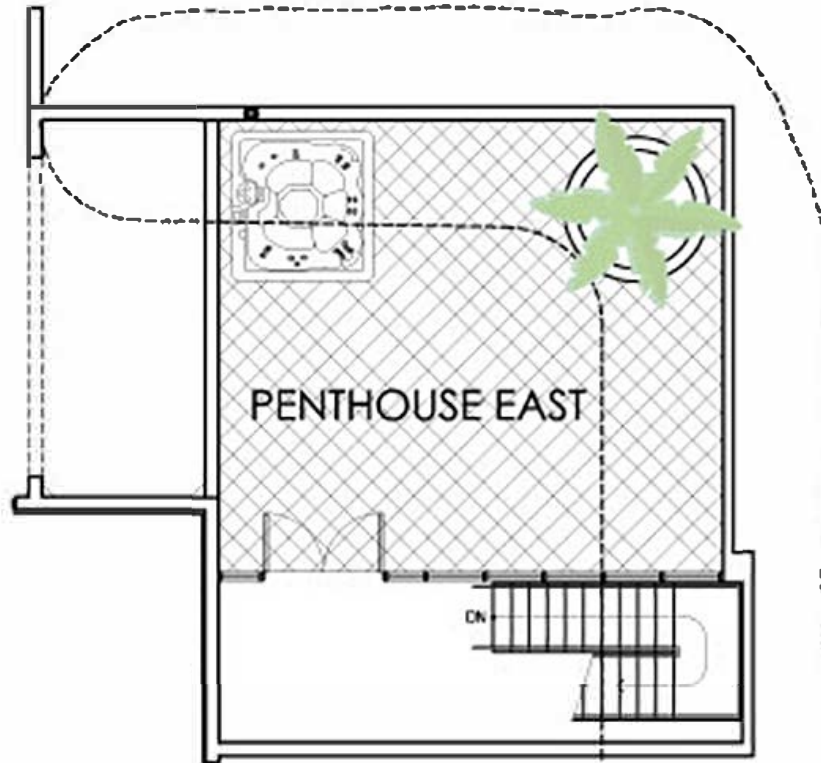
Level 1



Level 2



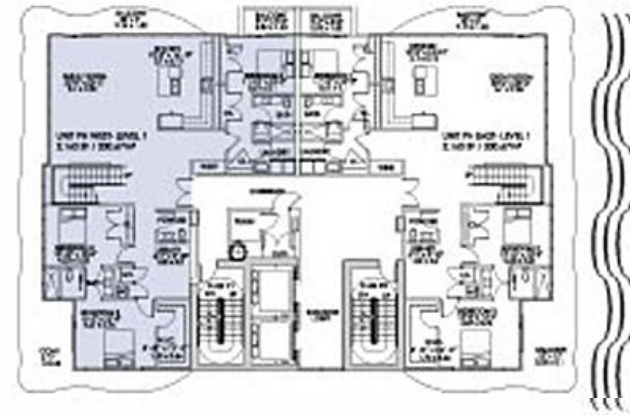
Level 3
Terrace





See legal disclaimers on final page

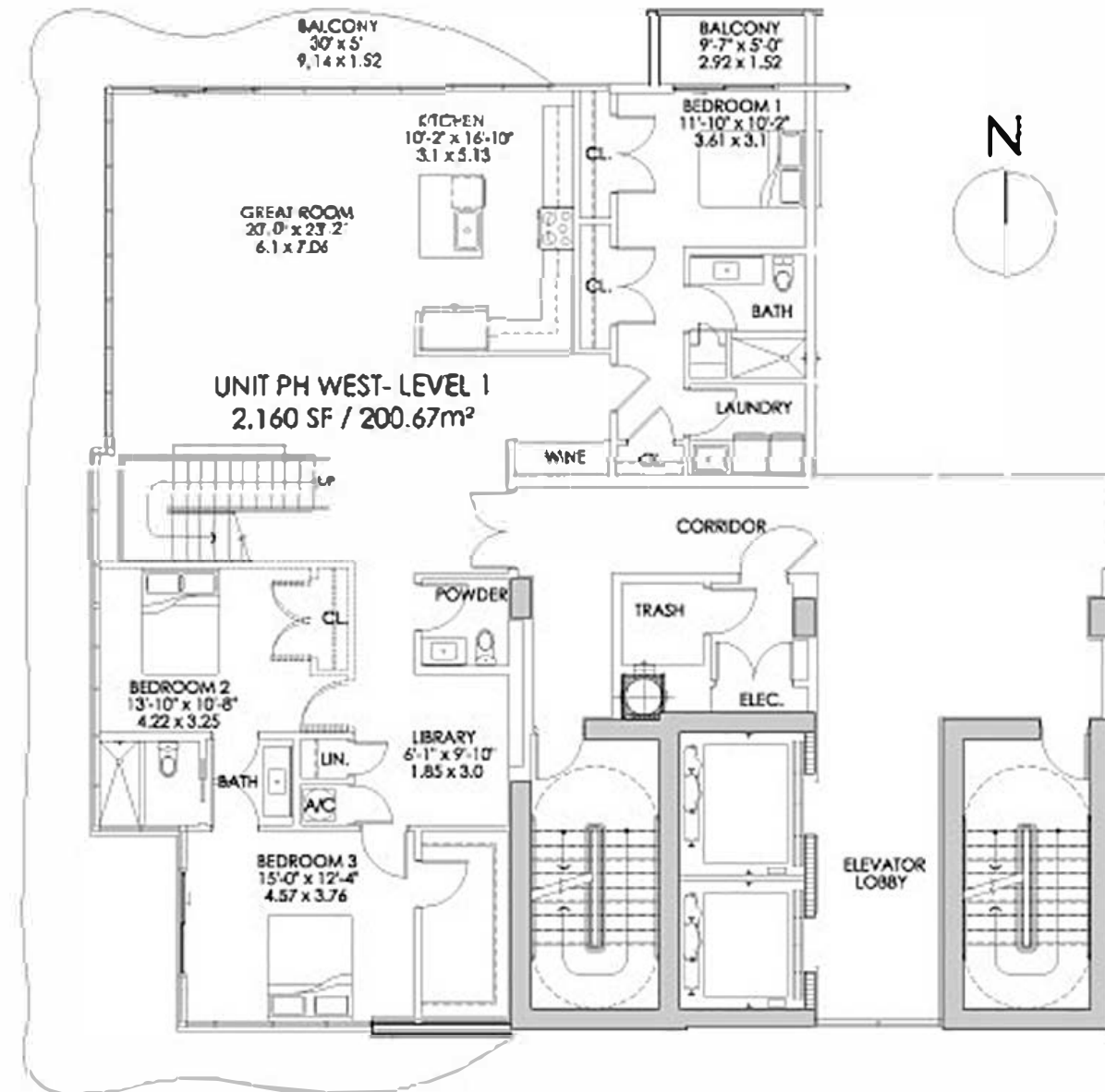
PENTHOUSE WEST



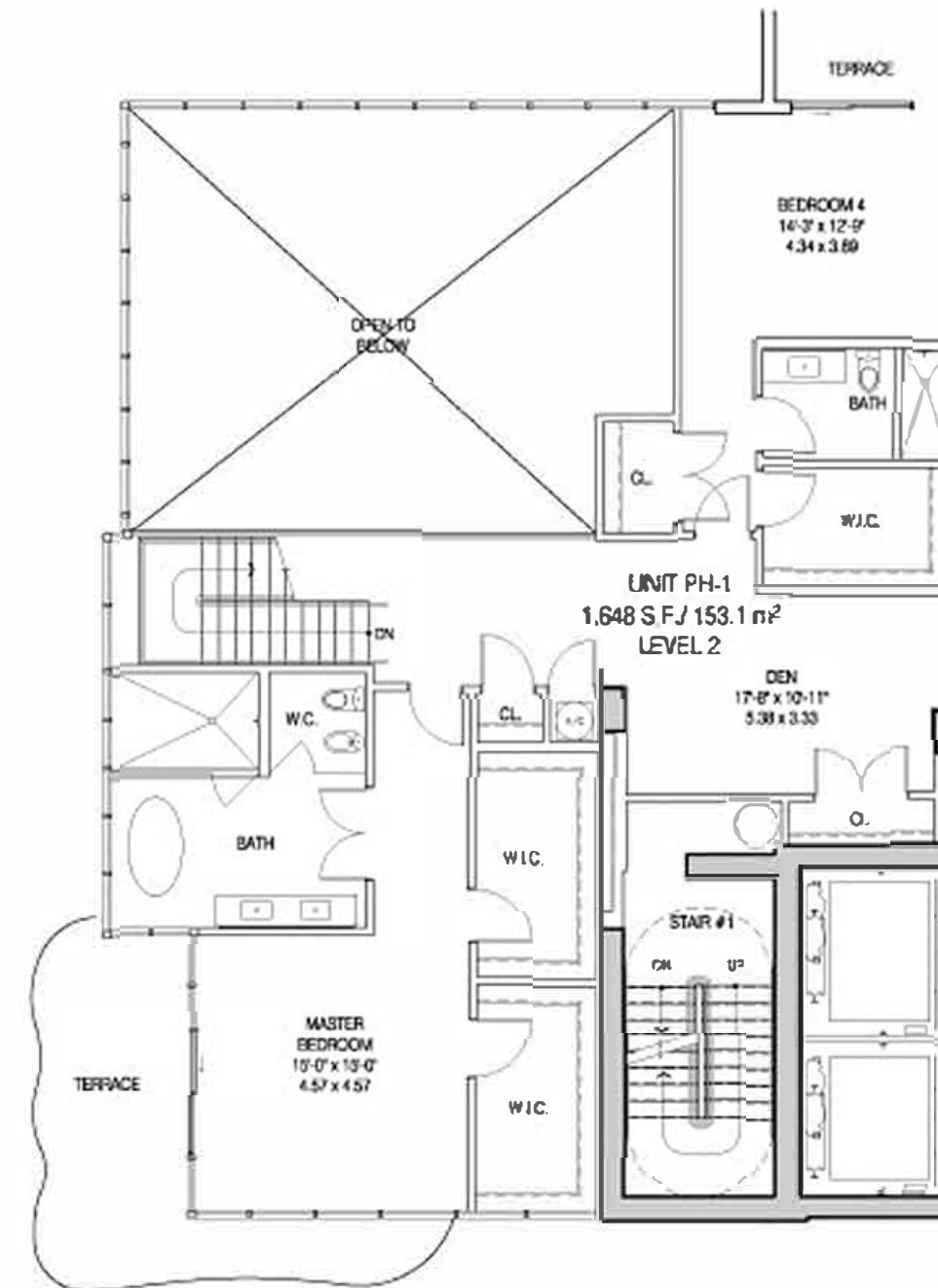
5 bedrooms, 4.5 bathrooms + Den
Surface: 3864 sf / 358.97 m²
Balconies: 790 sf / 79.39 m²
Rooftop terrace: 558 sf / 51.84 m²

Stated dimensions are measured to the exterior boundaries of the exterior walls and the centerline of interior demising walls and in fact vary from the dimensions that would be determined by using the description and definition of the "Unit" set forth in the Declaration (which generally only includes the interior airspace between the perimeter walls and excludes interior structural components). Note that measurements of rooms set forth on this floor plan are generally taken at the greatest points of each given room (as if the room were a perfect rectangle), without regard for any curvatures. Accordingly, the area of the actual room will typically be smaller than the product obtained by multiplying the stated length times width. All dimensions are approximate and may vary with actual construction and all floor plans and development plans are subject to change.

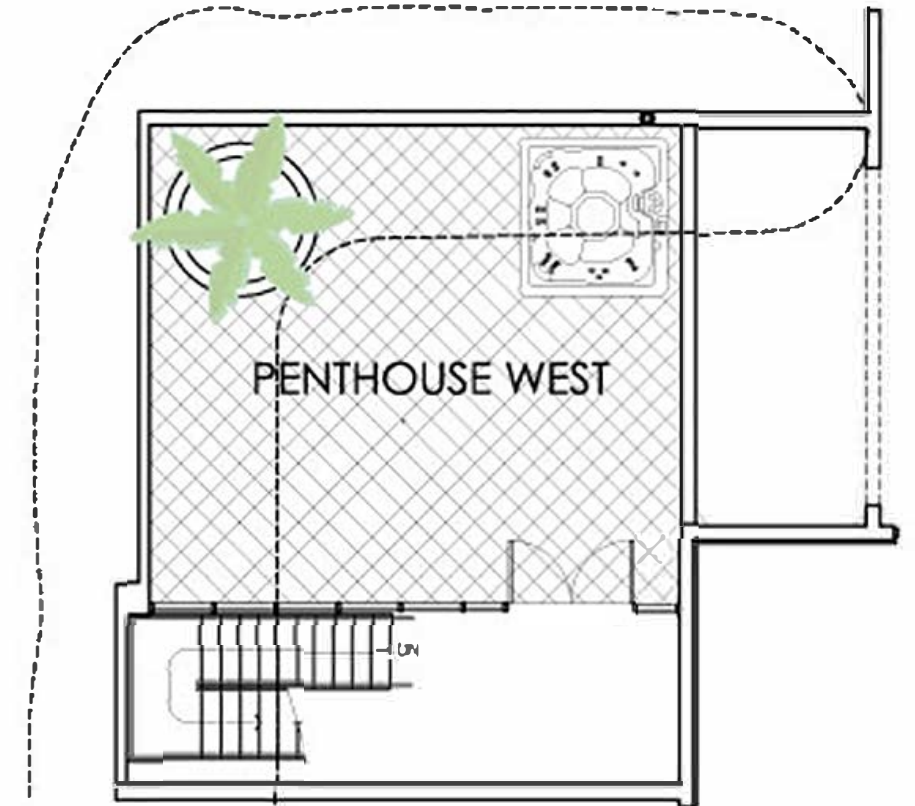
Level 1



Level 2



Level 3
Terrace

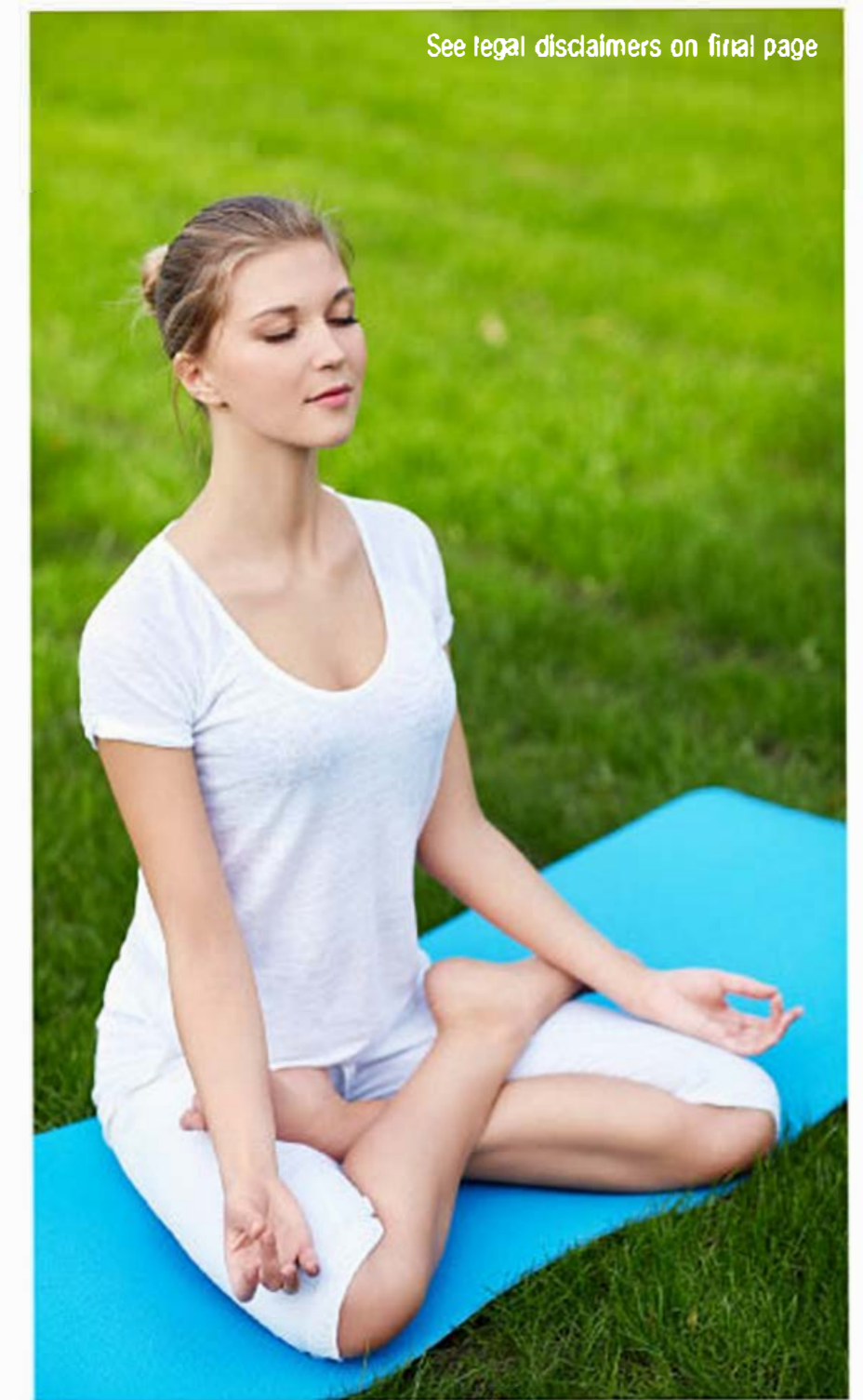




See legal disclaimers on final page

AMENITIES

- Swimming Pool
- Indoor / outdoor social room
- Expansive sun deck and lounge area
- Gazebos for multiple characters and views
- High-speed wireless internet in social spaces
- 24-hour reception desk and on-site monitoring
- Controlled-entry garage with assigned parking
- State-of-the-art gym
- Yoga Garden
- Private spa (sauna and steam) and massage treatment area
- BBQ area with summer kitchen features
- Multi-purpose area with game tables, kitchen/bar and flat screen TV
- Screening room/theater
- Music room
- Artistically decorated bikes for common use to go to shopping galleries and all beautiful surrounding areas
- Sky terrace at rooftop with indoor social spaces and wine cellar



See legal disclaimers on final page



Legal disclaimers:

This is not intended to be an offer to sell, or solicitation to buy, condominium units to residents of CT, ID, NY, NJ and OR, unless registered or exemptions are available, or in any other jurisdiction where prohibited by law, and your eligibility for purchase will depend upon your state of residency. This offering is made only by the prospectus for the condominium and no statement should be relied upon if not made in the prospectus. The sketches, renderings, graphic materials, plans, and specifications contained herein are proposed only, and the Developer reserves the right to modify, revise or withdraw any or all of same in its sole discretion and without prior notice. All improvements, designs and construction are subject to first obtaining the appropriate federal, state and local permits and approvals for same. These drawings and depictions are conceptual only and are for the convenience of reference. They should not be relied upon as representations, express or implied, of the final detail of the residences. The developer expressly reserves the right to make modifications, revisions, and changes it deems desirable in its sole and absolute discretion. All depictions of appliances, counters, soffits, floor coverings and other matters of detail, including, without limitation, items of finish and decoration, are conceptual only and are not necessarily included in each Unit or the Common Areas. The images/photographs contained herein may be renderings, stock photography or have been taken off-site and are used to depict the spirit of the lifestyles to be achieved rather than any that may exist or that may be proposed, and are merely intended as illustrations of the activities and concepts depicted therein. Consult your Agreement and the Prospectus for the items included with the Unit. Dimensions and square footage, if represented, are approximate and may vary with actual construction. Spider Investments Group LLC is not the project developer. This Condominium is being developed by Union Excalibur, LLC ("Developer"), which has a limited right to use the trademarked names and logos of Spider Investments Group LLC and any of its affiliates pursuant to a license and marketing agreement with Spider Investments Group LLC. Any and all statements, disclosures and/or representations shall be deemed made by Developer and not by Spider Investments Group LLC and you agree to look solely to Developer (and not to Spider Investments Group LLC and/or any of its affiliates) with respect to any and all matters relating to the marketing and/or development of the Condominium and with respect to the sales of units in the Condominium. The project graphics, renderings and text provided herein are copyrighted works owned by the developer. © 2015, Union Excalibur, LLC. All rights reserved. Unauthorized reproduction, display or other dissemination of such materials is strictly prohibited and constitutes copyright infringement. No real estate broker is authorized to make any representations or other statements regarding the projects, and no agreements with, deposits paid to or other arrangements made with any real estate broker are or shall be binding on the developer.

*As is customary, the number "13" has been skipped in the floor counts, so the floor directly above 12 is floor 14, and there is no 13th floor.

Don't dream it, live it



WWW.SPARKONEDGEWATER.COM
522 NE 34TH ST, MIAMI FL 33137